

## Evaluation of the postoperative systemic response in congenital heart defects<sup>☆</sup>



## Evaluación de la respuesta sistémica en el postoperatorio de las cardiopatías congénitas

Dear Editor:

Different postoperative prognostic markers have been identified in patients that have undergone congenital heart defect surgery, such as venous oxygen saturation and lactate levels.<sup>1</sup> Cardiac surgery with extracorporeal circulation (ECC) produces an inflammatory response consisting of hyperglycaemia and elevated C-reactive protein (CRP) and troponin (Tp) levels. The purpose of this study was to determine the impact of these parameters on postoperative morbidity.

We conducted a prospective observational study of a cohort of 101 patients in a paediatric intensive care unit (ICU). The inclusion criteria were: (a) age more than 1 month and (b) surgery with ECC. The exclusion criteria were: (a) refusal to give informed consent and (b) use of corticosteroids or insulin.

The preoperative variables were type of heart defect and surgical risk (RACHS-1). The postoperative variables were glycaemia (mg/dL), CRP (mg/L), and Tp (ng/L). Four venous blood samples were collected in order to measure these variables, at admission, at 4 and 8 h from admission, and at 8 am the following morning. Troponin was determined with the high sensitivity cardiac troponin T assay, and a level above 100 ng/L was considered pathological. We also measured other variables, such as duration of mechanical ventilation and length of ICU stay.

We classified the patients according to the RACHS-1 scoring system,<sup>2</sup> and attributed to them a high surgical complexity (HSC) when their RACHS-1 score was higher than or equal to 3. We defined sustained hyperglycaemia (SHG) as glycaemia higher than 126 mg/dL<sup>3</sup> in all four measurements. We defined prolonged mechanical ventilation (PMV) as a duration higher than or equal to 72 h; and a prolonged stay (PS) as a length of stay higher than or equal to 5 days.

A total of 22 children (22%) presented SHG associated with a PS (chi square=7.3;  $P < .05$ ). The patients with the highest levels of Tp were the ones that had PMV (Mann-Whitney=161;  $P < .001$ ) and a PS (Mann-Whitney=518;  $P < .001$ ). We also found a direct correlation between Tp levels and duration of mechanical ventilation ( $r=0.7$ ;  $P < .01$ ) (Fig. 1) and length of stay ( $r=0.5$ ;  $P < .01$ ).

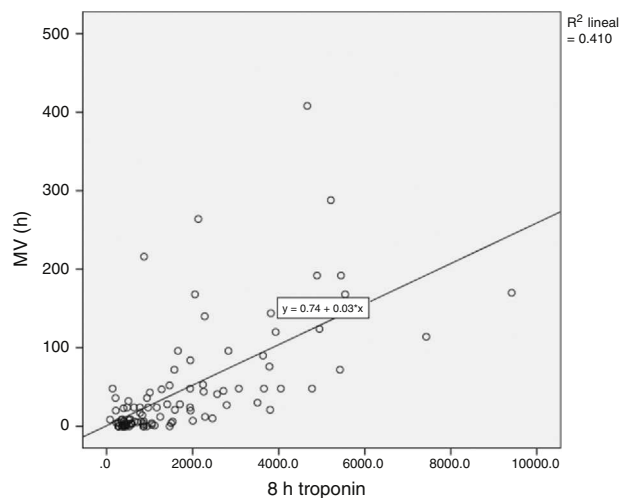
The most frequent mean value of the RACHS-1 was category 3 (42%). The RACHS-1 score was correlated with the duration of mechanical ventilation ( $r=0.5$ ;  $P < .01$ ), and HSC

was associated with PS (chi-square = 5.2;  $P < .05$ ). The levels of CRP had no statistical significance.

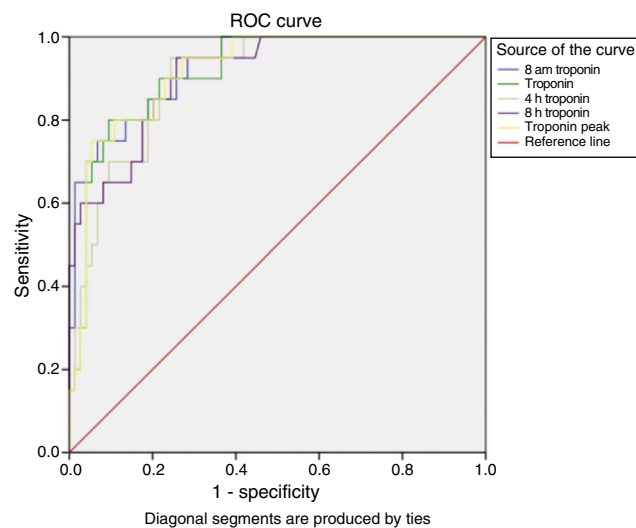
The variables that influenced PMV in our multivariate analysis were age and weight ( $P < .01$ ), duration of ECC and aortic clamping ( $P < .05$ ), the RACHS-1 score ( $P < .05$ ), and levels of Tp ( $P < .01$ ). The variables associated with PS were age and weight ( $P < .01$ ), duration of ECC ( $P < .01$ ) and of aortic clamping ( $P < .05$ ), the RACHS-1 score ( $P < .01$ ) and levels of Tp ( $P < .01$ ).

We proceeded to perform a multivariate analysis to predict PMV, in which only Tp reached statistical significance ( $P < .01$ ). When we dichotomised the variable, we observed that every Tp determination was a significant predictor of PMV (Fig. 2).

The significant variables in the predictive model for PS were weight, duration of ECC and aortic clamping, and Tp level at 8 am. Among them, Tp at 8 am was the only variable with an area under the ROC curve of more than 0.75. After



**Figure 1** Direct correlation between troponin levels and duration of mechanical ventilation. Troponin is given in ng/L.



**Figure 2** ROC curve for troponin level variables in prediction of prolonged mechanical ventilation.

<sup>☆</sup> Please cite this article as: García-Hernández JA, Fernández-Eliás M, Martínez-López AI, Cayuela-Domínguez A, Cano-Franco J. Evaluación de la respuesta sistémica en el postoperatorio de las cardiopatías congénitas. An Pediatr (Barc). 2015;82: 435-436.

dichotomisation, all Tp determinations were significant predictors of PS.

The ECC technique produces a systemic response consisting of adrenergic stimulation<sup>4</sup> and uncontrolled activation of inflammation leading to hyperglycaemia and the release of inflammatory mediators. The relationship between hyperglycaemia and a poor prognosis is not clearly established, although in our study SHG was associated with PS ( $P < .05$ ).

Elevation of Tp levels has been associated with postoperative complications,<sup>5</sup> and a decreasing trend is a marker of favourable prognosis. In this study, elevated Tp was associated with long durations of mechanical ventilation and lengths of stay, and could predict PMV (Fig. 2) as well as PS. The RACHS-1 score was correlated with the duration of mechanical ventilation; and patients with a HSC were the patients that had a PS.

The conclusions of this study are that Tp is the best predictor of postoperative morbidity and that a multifactorial assessment is a useful tool to identify children at risk, as demonstrated by other authors.<sup>6</sup>

## References

- García-Hernández JA, Benítez-Gómez IL, Martínez-López AI, Praena-Fernández JM, Cano-Franco J, Loscertales-Abril M. Prognostic markers of mortality after congenital heart defect surgery. *Ann Pediatr*. 2012;77:366–73.
- Mildh L, Pettilä V, Sairanen H, Rautiainen P. Predictive value of paediatric risk of mortality score and risk adjustment for congenital heart surgery score after paediatric open-heart surgery. *Interact Cardiovasc Thorac Surg*. 2007;6:628–31.
- DeCampli WM, Olsen MC, Munro HM, Felix DE. Perioperative hyperglycemia: effect on outcome after infant congenital heart surgery. *Ann Thorac Surg*. 2010;89:181–5.
- Allan CK, Newburger JW, McGrath E, Elder J, Psoinos C, Laussen PC, et al. The relationship between inflammatory activation and clinical outcome after infant cardiopulmonary bypass. *Anesth Analg*. 2010;111:1244–51.
- Mildh LH, Pettilä V, Sairanen HI, Rautiainen PH. Cardiac troponin T levels for risk stratification in pediatric open heart surgery. *Ann Thorac Surg*. 2006;82:1643–8.
- Carmona F, Manso PH, Vicente WV, Castro M, Carlotti AP. Risk stratification in neonates and infants submitted to cardiac surgery with cardiopulmonary bypass: a multimarker approach combining inflammatory mediators, N-terminal pro-B-type natriuretic peptide and troponin I. *Cytokine*. 2008;42:317–24.

J.A. García-Hernández<sup>a,\*</sup>, M. Fernández-Elías<sup>a</sup>,  
A.I. Martínez-López<sup>b</sup>, A. Cayuela-Domínguez<sup>c</sup>,  
J. Cano-Franco<sup>a</sup>

<sup>a</sup> *Unidad de Gestión Clínica de Cuidados Críticos y Urgencias, Hospital Infantil Universitario Virgen del Rocío, Sevilla, Spain*

<sup>b</sup> *Equipo Básico de Atención Primaria, Centro de Salud Alcosa, Sevilla, Spain*

<sup>c</sup> *Unidad de Apoyo a la Investigación, Unidad de Gestión Clínica de Salud Pública, Distrito Sanitario Sevilla Sur-Hospital de Valme, Sevilla, Spain*

\* Corresponding author.

E-mail address: [garcier@gmail.com](mailto:garcier@gmail.com)

(J.A. García-Hernández).

## Clinical and molecular diagnostics of a cartilage-hair hypoplasia: Two new cases<sup>☆</sup>



### El diagnóstico clínico-molecular en la hipoplasia de cartílago-pelo: dos nuevos casos

Dear Editor:

The diagnosis of cartilage-hair hypoplasia, also known as McKusick type metaphyseal chondrodysplasia (OMIM 250250), is based on disproportionate short stature, bowed femurs and tibias, short and broad phalanges, loose ligaments with characteristic incomplete extension of the elbows and sparse hair, and was first described in the Amish population of the United States.<sup>1</sup> It is caused by mutations in the *RMRP* gene (OMIM 157660; 9p13),<sup>2</sup> a nuclear noncoding gene for an RNA chain that is a subunit of the mitochondrial RNase MRP protein complex, which is involved in ribosomal

assembly and cellular cycle regulation. The disorder has a recessive pattern of inheritance, and depending on the severity of the mutation it can have a broad range of clinical manifestations (from mild to severe): metaphyseal dysplasia without hypotrichosis, cartilage-hair dysplasia and anauxetic dysplasia.<sup>3</sup>

### Case 1

Boy, 7 months of age, with healthy nonconsanguineous Spanish parents. He was born at 40 weeks, with a weight of 3200 g, length of 45 cm and head circumference of 36 cm. He was admitted at 4 months of age with acute gastroenteritis. The physical examination revealed sparse, fine and brittle hair, shortened limbs, moderate varus bowing of the femurs, and short fingers. His height was 65.5 cm (−1.31 SD) and his weight 7850 g (−0.72 SD). Bone radiography showed shortening of long bones and metaphyseal widening. Immunologic testing showed moderate neutropaenia and lymphocytopenia (reduced T CD4+ and B+T cells); low levels of IgA and normal IgM and IgG levels. These findings led to a clinical diagnosis of cartilage-hair hypoplasia. An RMRP test was ordered at 3 years of age, which detected the presence of 2 heterozygous mutations [g.236A>G, paternal; g.260G>A, maternal]. This diagnosis allowed for screening the maternal

<sup>☆</sup> Please cite this article as: Fenollar-Cortés M, Lara-Orejas E, González-Meneses A, Ruibal-Francisco JL, Trujillo-Tiebas MJ. El diagnóstico clínico-molecular en la hipoplasia de cartílago-pelo: dos nuevos casos. *An Pediatr (Barc)*. 2015;82:436–439.