

## Foramina parietalia permagna: Clinical radiological evaluation of a Spanish family with an undescribed mutation in the *ALX4* gene<sup>☆,☆☆</sup>



### Foramina parietalia permagna: evaluación clínico radiológica de una familia española con mutación no descrita en el gen *ALX4*

Dear Editor:

The parietal foramina are small openings measuring approximately 1 mm near the sagittal border of the parietal bones. They are a normal variant, unilateral or bilateral, found in up to 60% of the population. The term giant parietal foramina or foramina parietalia permagna (FPP) refers to openings in this region with a diameter greater than 5 mm, and its incidence is much lower (1 per 15,000–25,000 individuals).<sup>1</sup> In fact, this denomination is inaccurate, as small parietal foramina may coexist with giant foramina, and these large openings are not always an enlarged parietal foramen.

Foramina parietalia permagna is a primary ossification defect at the level of the parietal eminence. In young children, it may present as a persistently enlarged posterior fontanelle, with subsequent ossification of a midline bridge during childhood giving rise to the two foramina.<sup>1</sup>

In most cases, FPP is asymptomatic, although it may be associated with headache, nausea, vomiting or intellectual disability and sometimes to other malformations: craniosynostosis, cortical dysplasia, microcephaly, ear or eye abnormalities, craniofacial dysostosis, syndactyly, multiple exostosis or cerebrovascular abnormalities.<sup>1,2</sup>

Eighty-five percent of cases are due to genetic variants with an autosomal dominant pattern of inheritance and a high but incomplete penetrance (90%).<sup>1</sup> Most of the variants described to date have been in the *MSX2* (5q35.2) or *ALX4* (11p11.2) genes. The prevalence of variants in each of these genes is similar, and the clinical presentations are nearly indistinguishable, since both *MSX2* and *ALX4* are homeobox genes that encode homeodomain transcription factors involved in skeletal development.<sup>3</sup>

The diagnosis of FPP is based on the family history and physical examination, with the possible addition of imaging

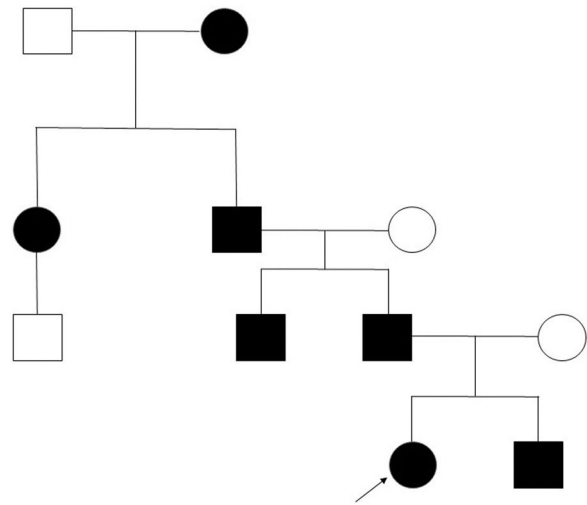


Figure 1 Pedigree chart.

tests: the chest radiograph features symmetric lucencies in the parasagittal zone of parietal bones, computed tomography (CT) with 3D reconstruction can demarcate the bony defect and magnetic resonance imaging (MRI) can detect other associated intracranial abnormalities.<sup>1</sup> The diagnosis is confirmed by the detection of a pathogenic variant using molecular techniques.

Treatment is usually conservative, with options including preventive measures such as cranial orthosis to avoid brain injury. Surgery is reserved for large foramina associated with a high risk of injury: young children who are very active, have seizures or with additional malformations requiring surgery.<sup>1,4</sup>

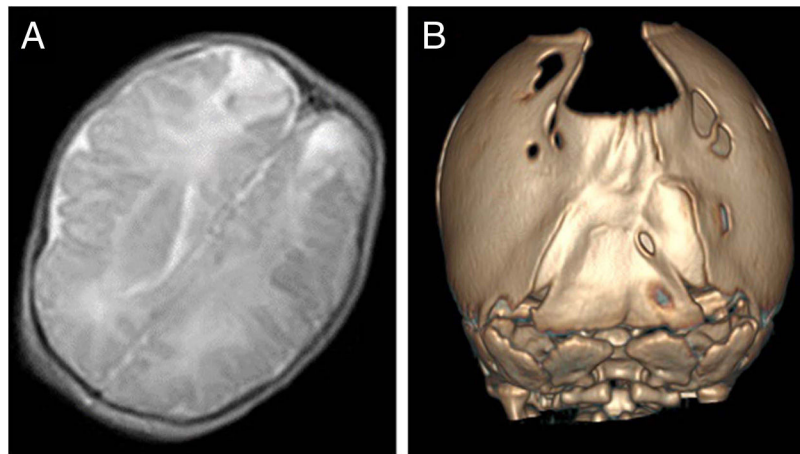
**Clinical case.** We present the pedigree of a Spanish family with 7 members in 4 consecutive generations (Fig. 1) with a diagnosis of FPP that carried a heterozygous novel variant in the *ALX4* gene (c.404\_405dupG).

The index case was a newborn girl with a diagnosis of cranial bone defects made by ultrasound in the prenatal period that led to scheduling an elective caesarean delivery. At birth, the infant had an enlarged posterior fontanelle (5 × 5 cm) in the absence of additional craniofacial anomalies, with a normal appearance and a normal neurologic examination. A transfontanelar ultrasound examination ruled out additional malformations, but also detected bilateral echogenic lesions in the parietooccipital region compatible with infarction possibly secondary to trauma, confirmed by means of a cranial MRI (Fig. 2A). At 3 years of follow-up, the patient remains asymptomatic, with normal neurodevelopment.

In a younger brother, the diagnosis was made antenatally by MRI, which revealed absence of bone tissue in the parieto-occipital sulcus. In the initial visit to the paediatric neurology unit, the examination revealed frontal bossing with occipital flattening and bone crests in both lambdoid sutures and the parieto-occipital defect on palpation. A CT scan of the calvarium was performed, leading to diagnosis of bilambdoid synostosis associated

<sup>☆</sup> Please cite this article as: Bote Gascón M, Martínez del Río C, García Ron A. Foramina parietalia permagna: evaluación clínico radiológica de una familia española con mutación no descrita en el gen *ALX4* (c.404\_405dupG). *An Pediatr (Barc)*. 2021;95:121–122.

<sup>☆☆</sup> Previous presentation: this case was presented as a poster at the 66th Congress of the Asociación Española de Pediatría, June 7–9, 2018, Zaragoza, Spain.



**Figure 2** A) Infarction in both parietal lobes. B) Bilambdoid synostosis associated with foramina parietalia permagna.

with FPP (Fig. 2B). The findings of the neurologic examination were normal. Surgery was performed to correct the craniosynostosis.

The only significant finding in the evaluation of the father was the presence of the parietal openings characteristic of FPP, in the absence of any other manifestation, as was also the case in the other 4 affected members of the family.

Foramina parietalia permagna is a rare and benign disorder. Knowledge of its clinical and genetic characteristics can prevent performance of unnecessary tests and treatments, reducing the anxiety of parents, especially in case of a prenatal diagnosis. When bilateral parietal openings are detected on prenatal ultrasound examinations, investigation of the pedigree is useful for the purpose of identifying other cases in the family that may have gone undetected due to intrafamilial variability or spontaneous closure of the bone defect. The diagnosis can be confirmed through the clinical and radiological evaluation and the detection of changes in the *ALX4* or *MSX2* genes in relatives or in the foetus.<sup>5,6</sup> The presence of a skull defect in and of itself is not an indication for elective caesarean delivery since, as occurred in the case presented in this article, this intervention does not completely eliminate the risk of trauma secondary to the birth process.

## References

- Griessenauer CJ, Veith P, Mortazavi MM, Stewart C, Grochowsky A, Loukas M. Enlarged parietal foramina: a review of genetics, prognosis, radiology, and treatment. *Childs Nerv Syst.* 2013;29:543–7.
- Gupta SN, Brook B, Rishikesh R. Parietal bone defect: differential diagnosis and neurologic associations. *Pediatr Neurol.* 2008;39:40–3.
- Mavrogiannis LA, Taylor IB, Davies SJ, Ramos FJ, Olivares JL, Wilkie AO. Enlarged parietal foramina caused by mutations in the homeobox genes *ALX4* and *MSX2*: from genotype to phenotype. *Eur J Hum Genet.* 2006;14:151–8.
- Perlyn CA, Schmelzer R, Govier D, Marsh JL. Congenital scalp and calvarial deficiencies: principles for classification and surgical management. *Plast Reconstr Surg.* 2005;115:1129–41.
- Saraç Sivriköz T, Altunoglu U, Kalelioglu İH, Yüksel A, Uyguner OZ, Has R, et al. *ALX4* related parietal foramina mimicking encephalocele in prenatal period. *Prenat Diagn.* 2016;36:591–3.
- Gabor L, Canaz H, Canaz G, Kara N, Gulec EY, Alatas I. Foramina parietalia permagna: familial and radiological evaluation of two cases and review of literature. *Childs Nerv Syst.* 2017;33:853–7.

Marta Bote Gascón\*, Carmen Martínez del Río, Adrián García Ron

*Servicio de Pediatría y sus Áreas Específicas, Unidad de Neuropediatría, Hospital Clínico San Carlos, Madrid, Spain*

\* Corresponding author.

E-mail address: [marta.madrid28@gmail.com](mailto:marta.madrid28@gmail.com) (M. Bote Gascón).

<https://doi.org/10.1016/j.anpede.2020.07.018>  
2341-2879/ © 2021 Published by Elsevier España, S.L.U. on behalf of Asociación Española de Pediatría. This is an open access article under the CC BY-NC-SA license (<http://creativecommons.org/licenses/by-nc-sa/3.0/>).